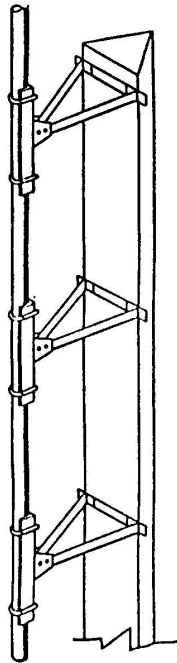
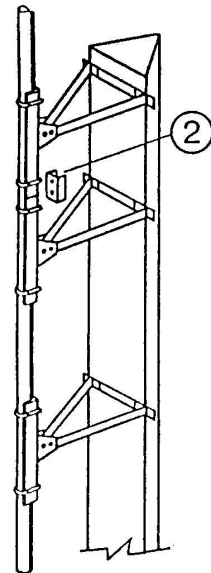


Código: 15-080

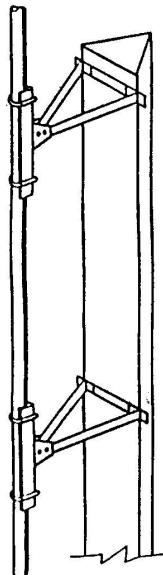
POSIBLES MONTAJES PARA LA FORMACION DE 4 A 8 DIPOLOS



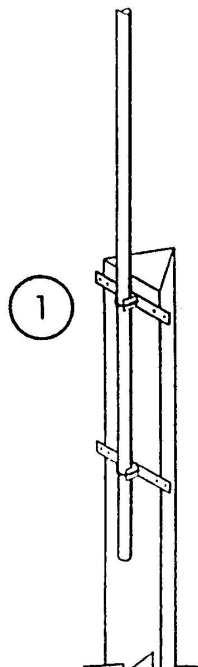
Montaje del soporte SL8DT



Montaje del soporte SL8DT



Montaje del soporte SL4DT



Montaje del soporte SE4DT

Medida "A" de separación entre Dipolos

Fcia. "A"	Fcia. "A"
120 - 2.20 mts.	315 - 0.84 mts.
125 - 2.11 mts.	320 - 0.83 mts.
130 - 2.03 mts.	325 - 0.81 mts.
135 - 1.95 mts.	330 - 0.80 mts.
140 - 1.88 mts.	335 - 0.79 mts.
145 - 1.82 mts.	340 - 0.78 mts.
150 - 1.76 mts.	345 - 0.76 mts.
155 - 1.70 mts.	350 - 0.75 mts.
160 - 1.65 mts.	355 - 0.74 mts.
165 - 1.60 mts.	360 - 0.73 mts.
170 - 1.55 mts.	365 - 0.72 mts.
175 - 1.50 mts.	370 - 0.71 mts.
180 - 1.46 mts.	375 - 0.70 mts.
185 - 1.42 mts.	380 - 0.69 mts.
190 - 1.39 mts.	385 - 0.68 mts.
195 - 1.35 mts.	390 - 0.67 mts.
200 - 1.32 mts.	395 - 0.66 mts.
205 - 1.28 mts.	400 - 0.66 mts.
210 - 1.25 mts.	405 - 0.65 mts.
215 - 1.22 mts.	410 - 0.64 mts.
220 - 1.20 mts.	415 - 0.63 mts.
225 - 1.17 mts.	420 - 0.62 mts.
230 - 1.14 mts.	425 - 0.62 mts.
235 - 1.12 mts.	430 - 0.61 mts.
240 - 1.10 mts.	435 - 0.60 mts.
245 - 1.08 mts.	440 - 0.60 mts.
250 - 1.05 mts.	445 - 0.59 mts.
255 - 1.03 mts.	450 - 0.58 mts.
260 - 1.01 mts.	455 - 0.58 mts.
265 - 0.99 mts.	460 - 0.57 mts.
270 - 0.97 mts.	465 - 0.57 mts.
275 - 0.96 mts.	470 - 0.56 mts.
280 - 0.94 mts.	475 - 0.56 mts.
285 - 0.93 mts.	480 - 0.55 mts.
290 - 0.91 mts.	485 - 0.55 mts.
295 - 0.89 mts.	490 - 0.54 mts.
300 - 0.88 mts.	495 - 0.54 mts.
305 - 0.86 mts.	500 - 0.53 mts.
310 - 0.85 mts.	505 - 0.53 mts.
	510 - 0.52 mts.

FORMACIONES
120 - 512 MHz

2- PIEZA DE UNION PARA EL MODELO SL8DT QUE LE SUMINISTRA LINEALIDAD A LA ANTENA.

